



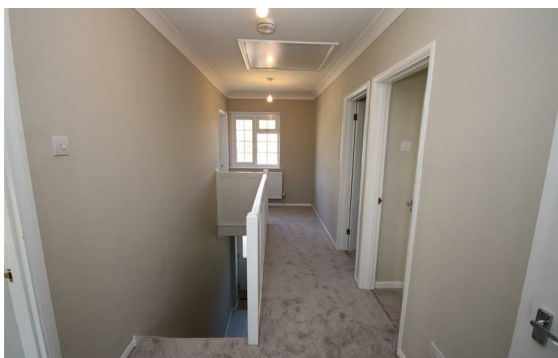
4 Bedrooms  
House - Detached  
Located in Bexleyheath  
£2,500 PCM



[crayford@livermores.co.uk](mailto:crayford@livermores.co.uk)

[www.livermores.co.uk](http://www.livermores.co.uk)

01322 550777



**LIVERMORES**  
THE ESTATE AGENTS

126 Crayford Road

Crayford

Kent

DA1 4ES

01322 550777

[crayford@livermores.co.uk](mailto:crayford@livermores.co.uk)

[www.livermores.co.uk](http://www.livermores.co.uk)

Situated in the charming area of Gravel Hill Close, Bexleyheath, Kent, this delightful detached house, offers a perfect blend of classic character and modern convenience. With four generously sized double bedrooms, this home is ideal for families seeking space and comfort.

Upon entering, you are welcomed by a bright and airy entrance hall that leads to two inviting reception rooms, perfect for both relaxation and entertaining. The newly fitted kitchen is a standout feature, providing a contemporary space for culinary enthusiasts, complemented by a utility room and a convenient ground floor WC.

The first floor boasts four spacious double bedrooms, ensuring ample room for family members or guests. The well-appointed bathroom serves the household with ease.

Outside, the property benefits from ample parking at the front, along with a garage for additional storage or vehicle space. The rear garden is a lovely size, offering a

## Energy Efficiency Rating: C

Agents Note: Whilst every care has been taken to prepare these particulars, they are for guidance purposes only. All measurements are approximate and are for general guidance purposes only and whilst every care has been taken to ensure their accuracy, they should not be relied upon and potential buyers/tenants are advised to recheck the measurements.